



TEST REPORT IEC 60335-2-14 Household and similar electrical appliances – Safety – Part 2-14: Particular requirements for kitchen machines	
Report Number	EFSH14060626-IE-01-L01-A1
Date of issue	2014-06-26, Amendment 1:2017-05-08
Total number of pages	28 pages
Applicant's name	
Address	
Test specification:	
Standard	<input checked="" type="checkbox"/> EN 60335-2-14:2006 + A1:2008 + A11:2012+ A12:2016 <input checked="" type="checkbox"/> EN 60335-1:2012+ A11:2014 <input checked="" type="checkbox"/> EN 62233:2008 <input type="checkbox"/> IEC 60335-2-14:2006 (Fifth Edition) + A1:2008 in conjunction with <input type="checkbox"/> IEC 60335-1:2010 (Fifth Edition)
Test procedure	GS approval + CE-LVD
Non-standard test method	N/A
Test Report Form No.	IEC60335_2_14I
Test Report Form(s) Originator	CQC
Master TRF	Dated 2012-03
Copyright © 2012 Worldwide System for Conformity Testing and Certification of Electrotechnical Equipment and Components (IECEE), Geneva, Switzerland. All rights reserved.	
This publication may be reproduced in whole or in part for non-commercial purposes as long as the IECEE is acknowledged as copyright owner and source of the material. IECEE takes no responsibility for and will not assume liability for damages resulting from the reader's interpretation of the reproduced material due to its placement and context.	
If this Test Report Form is used by non-IECEE members, the IECEE/IEC logo and the reference to the CB Scheme procedure shall be removed.	
This report is not valid as a CB Test Report unless signed by an approved CB Testing Laboratory and appended to a CB Test Certificate issued by an NCB in accordance with IECEE 02.	

Test item description	Blender
Trade Mark	N/A
Manufacturer.....	
Model/Type reference	GBL-002AL, GBL-002DL, GBL-003L, GBL-003DL, GBL-002A, GBL-002D, GBL-003, GBL-003D, GMB-001
Ratings	220-240V~, 50Hz, Class II for all models GBL-002AL, GBL-002DL, GBL-003L, GBL-003DL: 300-400W GBL-002A, GBL-002D, GBL-003, GBL-003D: 450W GMB-001: 250W

Testing procedure and testing location:		
<input type="checkbox"/>	CB Testing Laboratory:	Eurofins Product Testing Service (Shanghai) Co., Ltd.
Testing location/ address..... :		No. 395 West Jiangchang Road, Jing'an District, Shanghai, China
<input type="checkbox"/>	Associated CB Laboratory:	N/A
Testing location/ address..... :		N/A
Tested by (name + signature) :		Wise Feng/ Project Engineer
Approved by (name + signature) .. :		Squall Huang/ Project Supervisor
<input type="checkbox"/>	Testing procedure: TMP	
Testing location/ address..... :		N/A
Tested by (name + signature) :		N/A
Approved by (name + signature) .. :		N/A
<input type="checkbox"/>	Testing procedure: WMT	
Testing location/ address..... :		N/A
Tested by (name + signature) :		N/A
Witnessed by (name + signature) .. :		N/A
Approved by (name + signature) .. :		N/A
<input type="checkbox"/>	Testing procedure: SMT	
Testing location/ address..... :		N/A
Tested by (name + signature) :		N/A
Approved by (name + signature) .. :		N/A
Supervised by (name + signature) :		N/A
<input type="checkbox"/>	Testing procedure: RMT	
Testing location/ address..... :		N/A
Tested by (name + signature) :		N/A
Approved by (name + signature) .. :		N/A
Supervised by (name + signature) :		N/A

List of Attachments (including a total number of pages in each attachment):

European group differences and national differences (EU_GD_IEC60335_2_14N): 17 pages

(incorporated in the main report)

European group differences and national differences (EN 60335-1:2012/A11:2014): 1 page

(incorporated in the main report)

Photo document: 1 pages (incorporated in the main report)

Constructional data form (CDF): 4 pages(separated file)

Summary of testing: From the result of our inspection and tests on the submitted samples, we conclude they comply with the requirements of the standards.

Tests performed (name of test and test clause):

☒ CI.20 Stability and mechanical hazards

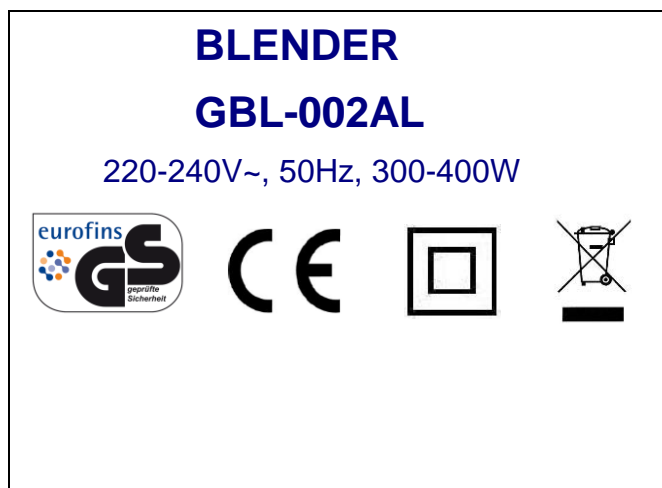
Testing location:

Eurofins Product Testing Service (Shanghai) Co., Ltd.

No. 395 West Jiangchang Road, Jing'an District, Shanghai, China

Summary of compliance with National Differences**List of countries addressed:**

National differences of Germany were checked.

Copy of marking plate**(representative, may differ with model no. and rated power input):**

Test item particulars	
Classification of installation and use	Portable appliance for household use only
Supply Connection	Type Y
.....	
Possible test case verdicts:	
- test case does not apply to the test object	N/A
- test object does meet the requirement	P (Pass)
- test object does not meet the requirement.....	F (Fail)
Testing	
Date of receipt of test item	2017-04-25
Date (s) of performance of tests	2017-04-25 to 2017-05-08
General remarks: <p>The test results presented in this report relate only to the object tested. This report shall not be reproduced, except in full, without the written approval of the Issuing testing laboratory. "(see Enclosure #)" refers to additional information appended to the report. "(see appended table)" refers to a table appended to the report.</p> <p>Throughout this report a <input checked="" type="checkbox"/> comma / <input type="checkbox"/> point is used as the decimal separator. Determination of the test result includes consideration of measurement uncertainty from the test equipment and methods.</p> <p>The related applicable CTL/OSM decisions have been considered and the requirements found fulfilled. For GS approval, EK1 541-13, EK1 281-05, EK1 527-12 Rev. 2 and EK1 646-16 are considered.</p>	
Manufacturer's Declaration per sub-clause 6.2.5 of IEC 60335-1:	
The application for obtaining a CB Test Certificate <input type="checkbox"/> Yes includes more than one factory location and a <input checked="" type="checkbox"/> Not applicable declaration from the Manufacturer stating that the sample(s) submitted for evaluation is (are) representative of the products from each factory has been provided.....	
When differences exist; they shall be identified in the General product information section.	
Name and address of factory (ies)	

General product information:

The appliances covered by this report are blenders for household and indoor use.

Each model consists of a power unit which envelops all the electric components, a jug and a blade unit. The jug is detachable from power unit.

There are three different kinds of bowl: (a) ordinary jug, (b) juice jug, (c) smaller than (a) and (b) GBL-002 series share a same power unit (Type A), while GBL-003 series share a same power unit (Type B), GMB-001 incorporated stand (Type C).

Type A and Type B have similar shape but different at the main switch type, Type A incorporated push-push switch and Type B incorporated rotary switch.

GBL-002 series and GBL-003 series have the grinder accessories which can be used to grind the ingredients like dried apricots, star anise, coffee beans, cardamom, cumin, paprika pepper and etc.

Model	Power unit	Motor type	Incorporated jug	Main switch type
GBL-002A	Type A	YH-7030M23-02D	a	Push-push
GBL-002AL	Type A	YH-7020M23-02D	a	Push-push
GBL-002D	Type A	YH-7030M23-02D	b	Push-push
GBL-002DL	Type A	YH-7020M23-02D	b	Push-push
GBL-003	Type B	YH-7030M23-02	a	Rotary
GBL-003L	Type B	YH-7020M23-02	a	Rotary
GBL-003D	Type B	YH-7030M23-02	b	Rotary
GBL-003DL	Type B	YH-7020M23-02	b	Rotary
GMB-001	Type C	YH-5425M230-01	c	Interlock switch

GBL-002A, GBL-002AL, GBL-003D, GBL-003L and GMB-001 were selected for tests of all clauses.

The most unfavourable test data was recorded.

Amendment 1:

The original test report ref. No. EFSH14060626-IE-01-L01, dated 2014-06-26 was modified on 2017-05-08 to include the following changes and/or additions:

1. Update the EK decision to EK1 541-13, EK1 281-05, EK1 527-12 Rev. 2 and EK1 646-16.
2. Update the standard to EN 60335-2-14:2006 + A1:2008 + A11:2012+ A12:2016 and EN 60335-1:2012+ A11:2014.

After review, Cl.20 was considered.

This report is only valid in conjunction with the original test report: EFSH14060626-IE-01-L01.

IEC 60335-2-14			
Clause	Requirement - Test	Result - Remark	Verdict
20	STABILITY AND MECHANICAL HAZARDS		--
20.2	Moving parts adequately arranged or enclosed as to provide protection against personal injury		P
	Protective enclosures, guards and similar parts are non-detachable, and		P
	have adequate mechanical strength		P
	Enclosures that can be opened by overriding an interlock are considered to be detachable parts		P
	Self-resetting thermal cut-outs and over current protective devices not causing a hazard, by unexpected reclosure		N/A
	Not possible to touch dangerous moving parts with the test probe described		P
	Detachable accessories are removed and covers are opened except that for : (IEC 60335-2-14)		—
	- centrifugal juicers, the cover and the container for collecting the residue are in position		N/A
	- graters and shredders, this is only applicable to accessories that are removed while the appliance is in operation		N/A
	Test probe not applied to: (IEC 60335-2-14)		—
	- appliances specified in the list		N/A
	– the following parts of other appliances:		N/A
	smooth shafts having a diameter not exceeding 8 mm, rotating at a speed not exceeding 1 500 rev/min and driven by motors having an input not exceeding 200 W		N/A
	outlet sides of grating and shredding disks rotating at a speed not exceeding 1 500 rev/min		N/A
	projections from the surface of grinding disks, cones and similar parts having a height less than 4 mm		N/A
	Test probe not applied to feed openings having a throat with following dimensions: (IEC 60335-2-14)		N/A
	- a height of at least 100 mm, measured from the upper edge of the cutting blade		N/A

IEC 60335-2-14			
Clause	Requirement - Test	Result - Remark	Verdict
	- an average of the maximum and minimum cross-sectional dimensions of the feed opening that does not exceed 65.5 mm		N/A
	- a maximum cross-sectional dimension of the feed opening that does not exceed 76 mm		N/A
	For blenders, detachable parts, except lids, are not removed. Test carried out with a test probe similar to that of test probe B of IEC 61032 but with circular stop face as specified. (IEC 60335-2-14)		P
20.112	The cutting blade of food processors stopped within 1,5 s after the lid has been opened or removed. (IEC 60335-2-14)		P
20.113	The lid interlock of food processors shall be constructed so that accidental operation of the appliances is prevented (IEC 60335-2-14)		P
	Lid interlock switches shall be biased-off switches		P
	If there is an interlock between the lid and the main switch, the lid shall be locked when the switch is in the on position		P
	When the lid is not correctly closed , the switch shall be locked in the off position		P
20.114	Access to dangerous moving parts of food processors prevented for all combinations of assembly of detachable parts that allow the motor to operate: comply with test as specified (IEC 60335-2-14)		P

IEC60335_2_14N - ATTACHMENT			
Clause	Requirement - Test	Result - Remark	Verdict

**ATTACHMENT TO TEST REPORT IEC 60335-2-14
EUROPEAN GROUP DIFFERENCES AND NATIONAL DIFFERENCES**

Household and similar electrical appliances – Safety –
Part 2: Particular requirements for kitchen machines

Differences according to:	EN 60335-2-14:2006 + A1:2008 + A11:2012 + A12: 2016 used in conjunction with EN 60335-1:2012 EN 62233:2008
Attachment Form No.:	EU_GD_IEC60335_2_14N
Attachment Originator:	LCIE
Master Attachment:	2016-08
Copyright © 2016 IEC System for Conformity Testing and Certification of Electrical Equipment (IECEE), Geneva, Switzerland. All rights reserved.	

IEC60335_2_14N - ATTACHMENT			
Clause	Requirement - Test	Result - Remark	Verdict

	CENELEC COMMON MODIFICATIONS		
6.1	Delete "class 0" and "class 01"		N/A
	Class II or class III for hand-held kitchen machines (EN 60335-2-14)	Not hand-held kitchen machines	N/A
7.1	Single-phase appliances to be connected to the supply mains: 230 V covered		P
	Multi-phase appliances to be connected to the supply mains: 400 V covered		N/A
7.10	The accessible switch required by 22.40 distinguished from other manual devices by means of shape, or size, or surface texture, or position, etc. (EN 60335-2-14)		P
	An indication that the device has been operated is given by:		P
	• a tactile feedback, or		P
	• an audible and visual feedback		P
	A selector switch with an off-position clearly identifiable is allowed (EN 60335-2-14)		P
	An ON/OFF switch, if any, is considered a suitable device to stop operational functions (EN 60335-2-14)		P
	A plug is not considered a suitable device to stop operational functions, as it can be difficult to be reached by vulnerable persons (EN 60335-2-14)		P
7.12	The instructions for appliances shall warn of potential injury from misuse (EN 60335-2-14)		P
	The instructions for appliances shall include the substance of the following: (EN 60335-2-14)		--
	Always disconnect the appliance from the supply if it is left unattended and before assembling, disassembling or cleaning (EN 60335-2-14)		P
	The instructions for bean slicers, berry-juice extractors, blenders and hand-held blenders churns, centrifugal juicers, coffee mills, food mixers, food processors, grain grinders, knife sharpeners, knives, mincers, noodle makers, potato peelers, shredders, sieving machines and slicing machines shall include the substance of the following: (EN 60335-2-14)		--
	This appliance shall not be used by children. Keep the appliance and its cord out of reach of children (EN 60335-2-14)		P

IEC60335_2_14N - ATTACHMENT			
Clause	Requirement - Test	Result - Remark	Verdict
	The instructions for can openers, citrus-fruit squeezers, cream whippers, egg beaters, graters and ice-cream machines include the substance of the following: (EN 60335-2-14)		--
	This appliance can be used by children aged from 8 years and above if they have been given supervision or instruction concerning use of the appliance in a safe way and if they understand the hazards involved (EN 60335-2-14)		N/A
	Cleaning and user maintenance shall not be made by children unless they are aged from 8 years and above and supervised (EN 60335-2-14)		N/A
	Keep the appliance and its cord out of reach of children aged less than 8 years (EN 60335-2-14)		N/A
	The instructions also include the substance of the following: (EN 60335-2-14)		--
	Appliances can be used by persons with reduced physical, sensory or mental capabilities or lack of experience and knowledge if they have been given supervision or instruction concerning use of the appliance in a safe way and if they understand the hazards involved (EN 60335-2-14)		P
	Children shall not play with the appliance (EN 60335-2-14)		P
7.12.Z1	The specific instructions related to the safe operation of this appliance is collated together in the front section of the user instructions		P
	The height of the characters, measured on the capital letters, is at least 3 mm		P
	These instructions are also available in an alternative format, e.g. on a website		P
8.1.1	Also test probe 18 of EN 61032 is applied		P
	The appliance being in every possible position during the test		P
	The force on the probe in the straight position is increased to 10 N when probe 18 is used		P
	When using test probe 18 the appliance is fully assembled as in normal use without any parts removed, and		P
	parts intended to be removed for user maintenance are also not removed		P
8.2	Compliance is checked by applying the test probes of EN 61032		P

IEC60335_2_14N - ATTACHMENT			
Clause	Requirement - Test	Result - Remark	Verdict
	For built-in appliances and fixed appliances, the test probe B and probe 18 of EN 61032 are applied only after installation	Not built-in appliances	N/A
11.8	During the test, the temperature rises are monitored continuously and shall not exceed the values shown in 65 Table 3 and Table Z101". (EN 60335-2-14)		P
11.8	Footnotes to "External enclosure of motor-operated appliances" to be taken into account (EN 60335-2-14)		P
	Add the following Table Z101 (EN 60335-2-14)	(see appended table)	P
15.1.2	Appliances with an automatic cord reel tested with the cord in the most unfavourable position so that the reeling of the wet cord may affect electrical insulation during operation, the cord not being dried before reeling		N/A
20.2	When using the test probe similar to test probe B with a circular stop face, the accessories and detachable covers are removed		P
	Test probe 18 applied with a force of 2,5N on the appliance fully assembled		P
	The test probe, similar to test probe B but having a circular stop face with a diameter of 50 mm, is not applied to: (EN 60335-2-14)		--
	- appliances specified in the list		N/A
	- the following parts of other appliances:		N/A
	smooth shafts having a diameter not exceeding 8 mm, rotating at a speed not exceeding 1 500 r/min and driven by motors having an input not exceeding 200 W		N/A
	outlet sides of grating and shredding disks rotating at a speed not exceeding 1 500 r/min		N/A
	projections from the surface of grinding disks, cones and similar parts having a height less than 4 mm		N/A
	Test probe 18 not applied to: (EN 60335-2-14)		--
	- appliances specified in the list		N/A
	- the following parts of other appliances:		N/A
	smooth shafts having a diameter not exceeding 8 mm, rotating at a speed not exceeding 1 500 r/min and driven by motors having an input not exceeding 200 W		N/A

IEC60335_2_14N - ATTACHMENT			
Clause	Requirement - Test	Result - Remark	Verdict
	outlet sides of grating and shredding disks rotating at a speed not exceeding 1 500 r/min		N/A
	projections from the surface of grinding disks, cones and similar parts having a height less than 4 mm		N/A
	For blenders, detachable parts, except lids, are not removed. Test probe 18 is not applied to blenders Test probe 18 is not applied to blenders."		P
21.Z101	Drop test for hand-held appliances (EN 60335-2-14)	Not hand-held appliances	N/A
	The appliance not damaged to such an extent that compliance with this standard, in particular with Clauses 8 and 29, is impaired (EN 60335-2-14)		N/A
24.1	Components comply with the safety requirements specified in the relevant standards as far as they reasonably apply		P
	The requirements of Clause 29 of this standard apply between live parts of components and accessible parts of the appliance.		P
	The requirements of 30.2 of this standard apply to parts of non-metallic material in components including parts of non-metallic material supporting current-carrying connections inside components		P
	Components that have not been previously tested or do not comply with the standard for the relevant component are tested according to the requirements of 30.2		P
	Components that have been previously tested and shown to comply with the resistance to fire requirements in the standard for the relevant component need not be retested provided that:		--
	- the severity specified in the component standard is not less than the severity specified in 30.2, and		P
	- the test report for the component states whether it complied with the standard for the relevant component with or without flame, flames not exceeding 2 s during the test are ignored		N/A
	Unless components have been previously tested and found to comply with the relevant standard for the number of cycles specified, they are tested in accordance with 24.1.1 to 24.1.9		P
	For components mentioned in 24.1.1 to 24.1.9, no additional tests specified in the relevant standard for the component are necessary other than those specified in 24.1.1 to 24.1.9		P

IEC60335_2_14N - ATTACHMENT			
Clause	Requirement - Test	Result - Remark	Verdict
	Components that have not been separately tested and found to comply with the relevant standard, and		P
	components that are not marked or not used in accordance with their marking,		P
	are tested in accordance with the conditions occurring in the appliance, the number of samples being that required by the relevant standard		P
	Lamp holders and starter holders that have not been previously tested and found to comply with the relevant standard are tested as a part of the appliance and additionally comply with the gauging and interchangeability requirements of the relevant standard under the conditions occurring in the appliance	No such devices	N/A
	Where the relevant standard specifies these gauging and interchangeability requirements at elevated temperatures, the temperatures measured during the tests of Clause 11 are used		N/A
	Plugs and socket-outlets and other connecting devices of interconnection cords are not interchangeable with plugs and socket-outlets listed in IEC/TR 60083 or IEC 60906-1, or	No such constructions	N/A
	with connectors and appliance inlets complying with the standard sheets of IEC 60320-1,		N/A
	if direct supply to these parts from the supply mains gives rise to a hazard		N/A
24.1.7	If the remote operation of the appliance is via a telecommunication network, the relevant standard for the telecommunication interface circuitry in the appliance is EN 41003	No function of remote operation	N/A
	Compliance with Clause 8 of this standard is not impaired by connecting the appliance to a device covered by EN 41003		N/A
24.Z1	For motor running capacitors (IEC 60252-1 type P2) with a metallic enclosure having an overpressure fuse the flame testing of internal plastic parts supporting current carrying connections as required in 30.2.2 and 30.2.3.1 is not necessary	No motor running capacitors	N/A
25.6	Supply cords of single-phase portable appliances having a rated current not exceeding 16 A, fitted with a plug complying with the following standard sheets of IEC/TR 60083:		--
	- for Class I appliances: standard sheet C2b, C3b or C4 :		N/A

IEC60335_2_14N - ATTACHMENT			
Clause	Requirement - Test	Result - Remark	Verdict
	- for Class II appliances: standard sheet C5 or C6..... :	C5/C6	P
25.7	Rubber sheathed cords (60245 IEC 53) are not suitable for appliances intended to be used outdoors or when they are liable to be exposed to significant amount of ultraviolet radiation		N/A
	Halogen-free thermoplastic compound sheathed supply cords have properties at least those of:		--
	<ul style="list-style-type: none"> halogen-free thermoplastic compound sheathed cords (H03Z1Z1H2-F or H03Z1Z1-F), for appliances having a mass not exceeding 3 kg 		N/A
	<ul style="list-style-type: none"> halogen-free thermoplastic compound sheathed cords (H05Z1Z1H2-F or H05Z1Z1-F), for other appliances 		N/A
	Cross-linked halogen-free compound sheathed supply cords have properties at least those of cross-linked halogen-free compound sheathed cords (H07ZZ-F)		N/A
26.11	Conductors connected by soldering are not considered to be positioned or fixed so that reliance is not placed upon the soldering alone to maintain them in position unless they are held in place near the terminals independently of the solder		P
29.3.Z1	Appliance constructed so that if there is a possibility of damaging the insulation during installation, the insulation withstands the scratch and penetration test of 21.2		N/A
32	Compliance regarding electromagnetic fields is checked according to EN 62233		P
Annex I, 19.1.101	The appliance is supplied at rated voltage and operated under normal operation with each of the fault conditions specified		N/A
	The duration of the test is as specified in 19.7		N/A

ZA	ANNEX ZA (NORMATIVE) SPECIAL NATIONAL CONDITIONS		--
	Norway		--
19.5	The test is also applicable to appliances intended to be permanently connected to fixed wiring		Not checked

IEC60335_2_14N - ATTACHMENT			
Clause	Requirement - Test	Result - Remark	Verdict
	Norway		--
22.2	The second paragraph of this subclause, dealing with single-phase, permanently connected class I appliances having heating elements, is not applicable due to the supply system		Not checked
	All CENELEC countries		--
25.6 and 25.25	Information concerning National plug and socket-outlets is available from the CENELEC website. Normative national requirements concerning plug and socket-outlets are shown in the relevant National standard		P
	Ireland and United Kingdom		--
25.8	In the table, the lines for 10 A and 16 A are replaced by:		--
	> 10 and ≤ 13 1,25		N/A
	> 13 and ≤ 16 1,5		N/A
ZB	ANNEX ZB (INFORMATIVE) A-DEVIATIONS		--
	Ireland		--
25.6	These regulations apply to all plugs for domestic use at a voltage of not less than 200 V and in general allow only plugs complying with I.S. 401:1997, or equivalent, to be fitted to domestic appliances		Not checked
	United Kingdom		--
25.6	These regulations apply to all plugs for domestic use at a voltage of not less than 200 V and in general allow only plugs to BS 1363 to be fitted to domestic appliances. It also allows plugs to BS 4573 and EN 50075 to be fitted to shavers and toothbrushes		P
ZC	ANNEX ZC (NORMATIVE) NORMATIVE REFERENCES TO INTERNATIONAL PUBLICATIONS WITH THEIR CORRESPONDING EUROPEAN PUBLICATIONS		--

IEC60335_2_14N - ATTACHMENT			
Clause	Requirement - Test	Result - Remark	Verdict
	A list of referenced documents in this standard		P
ZD	ANNEX ZD (INFORMATIVE) IEC and CENELEC CODE DESIGNATIONS FOR FLEXIBLE CORDS		--
	A table with IEC and CENELEC code designations for flexible cords		P
ZE	ANNEX ZE (INFORMATIVE) SPECIFIC ADDITIONAL REQUIREMENTS FOR APPLIANCES AND MACHINES INTENDED FOR COMMERCIAL USE		--
7.1	Business name and full address of the manufacturer and, where applicable, his authorized representative.....:		N/A
	Model or type reference.....:		N/A
	Serial number, if any.....:		N/A
	Production year		N/A
	Designation of the appliance		N/A
7.12	Instructions provided with the appliance so that the appliance can be used safely		N/A
	The instructions contain at least the following information:		N/A
	- the business name and full address of the manufacturer and, where applicable, his authorized representative		N/A
	- model or type reference of the appliance as marked on the appliance itself, except for the serial number		N/A
	- the designation of the appliance together with its explanation in case it is given by a combination of letters and/or numbers		N/A
	- the general description of the appliance, when needed due to the complexity of the appliance		N/A
	- specific precautions if required during installation, operation, adjusting, user maintenance, cleaning, repairing or moving		N/A
	- when needed drawings, diagrams, descriptions and explanations necessary for the safe use and user maintenance of the appliance		N/A
	- the possible reasonably foreseeable misuse and, whenever relevant, a warning against the effects it may have on the safe use of the appliance		N/A

IEC60335_2_14N - ATTACHMENT			
Clause	Requirement - Test	Result - Remark	Verdict
	The words "Original instructions" appear on the language version(s) verified by the manufacturer or by the authorized representative		N/A
	When a translation of the original instructions has been provided by a person introducing the appliance on the market; the meaning of the sentence "Translation of the original instructions" appear in the relevant instructions delivered with the appliance		N/A
	The instructions for maintenance/service to be done by specialized personnel, mandated by the manufacturer or the authorized representative may be supplied in only one Community language which the specialized personnel understand		N/A
	The instructions indicate the type and frequency of inspections and maintenance required for safe operation including the preventive maintenance measures		N/A
7.12.ZE1	If needed for specific appliances, the following information to be given:		--
	<ul style="list-style-type: none"> on use, transportation, assembly, dismantling when out of service, testing or foreseeable breakdowns, if these operations have consequences on stability of the appliance in order to avoid overturning, falling or uncontrolled movements of the appliance or of its component parts 		N/A
	<ul style="list-style-type: none"> on how to maintain adequate mechanical stability when in use, during transportation, assembly, dismantling, scrapping and any other action involving the appliance 		N/A
	<ul style="list-style-type: none"> on the protective measures to be taken by the user, including, where appropriate, the personal protective equipment to be provided 		N/A
	<ul style="list-style-type: none"> on the operating method to be followed in the event of accident or breakdown; if a blockage is likely to occur the operating method to safely unblock the appliance 		N/A
	<ul style="list-style-type: none"> on the specifications on the spare parts to be used, when these affect the health and safety of the operator 		N/A
	<ul style="list-style-type: none"> on airborne noise emissions, determined and declared in accordance with the relevant Part 2, which includes: 		--

IEC60335_2_14N - ATTACHMENT			
Clause	Requirement - Test	Result - Remark	Verdict
	- the A-weighted emission sound pressure level at workstations, where this exceeds 70 dB(A)		N/A
	- where this level does not exceed 70 dB(A), this fact is indicated		N/A
	- the peak C-weighted instantaneous sound pressure value at workstations, where this exceeds 63 Pa (130 dB in relation to 20 µPa)		N/A
	- the A-weighted sound power level emitted by the machinery, where the A-weighted emission sound pressure level at workstations exceeds 80 dB(A)		N/A
7.12.ZE2	The instructions includes a warning to disconnect the appliance from its power source during service and when replacing parts		N/A
	If the removal of the plug is foreseen, it is clearly indicated that the removal of the plug has to be such that an operator can check from any of the points to which he has access that the plug remains removed		N/A
	If this is not possible, due to the construction of the appliance or its installation, a disconnection with a locking system in the isolated position is provided		N/A
19.11.4.8	The appliance continues to operate, without causing any hazard to the user, from the same point in its operating cycle at which the voltage fluctuation occurred, or		N/A
	a manual operation is required to restart it		N/A
20.1	Appliances and their components and fittings have adequate mechanical stability during transportation, assembly, dismantling and any other action involving the appliance		N/A
20.2	Dangerous moving transmission parts safeguarded either by design or guards		N/A
	When guards are used, they are fixed guards, interlocking movable guards or protective devices		N/A
	Moving parts directly involved in the function of the appliance which cannot be made completely inaccessible fitted with:		--
	- fixed guards or interlocking movable guards preventing access to those sections of the parts that are not used in the work, and		N/A

IEC60335_2_14N - ATTACHMENT			
Clause	Requirement - Test	Result - Remark	Verdict
	- adjustable guards restricting access to those sections of the moving parts where access is necessary		N/A
	Interlocking movable guards used where frequent access is required		N/A
21.1	Appliances and their components and fittings have adequate mechanical strength and is constructed to withstand such rough handling that may be expected in normal use, during transportation, assembly, dismantling, scrapping and any other action involving the appliance		N/A
22.ZE.1	For appliances provided with a seat, the seat gives adequate stability		N/A
	The distance between the seat and the control devices capable of being adapted to the operator		N/A
22.ZE.2	For appliances provided with separate devices for the start and the stop functions, the stop function is unambiguously identifiable and does always override the start function		N/A
	For appliances provided with one device performing the start and the stop function, the stop function is unambiguously identifiable and does always override the start function		N/A
22.ZE.3	Appliances designed in such a way that incorrect mounting is avoided, if this can lead to an unsafe situation		N/A
	If this is not possible, information on the correct mounting is given directly on the part and/or the enclosure		N/A
22.ZE.4	Where the weight, size or shape prevents appliances from being moved manually, they are fitted with attachments for lifting gear, or		N/A
	so designed that they can be fitted with such attachments, or		N/A
	be shaped in such a way that standard lifting gear can easily be used		N/A
	Appliances to be moved manually are constructed or equipped so that they can be moved easily and safely		N/A
22.ZE.5	The fixing systems of fixed guards which prevent access to dangerous moving transmission parts only removable with the use of tools		N/A

IEC60335_2_14N - ATTACHMENT			
Clause	Requirement - Test	Result - Remark	Verdict
	If such guards have to be removed by the user for routine cleaning or maintenance their fixing systems remain attached to the fixed guards or to the machine after removal		N/A
	Where possible, guards are incapable of remaining in place without their fixings		N/A
	This does not apply if, after removal of the screws, or if the component is incorrectly repositioned, the appliance becomes inoperative		N/A
	Movable guards are interlocked		N/A
	The interlocking devices prevent the start of hazardous appliance functions until the guards are fixed in their position, and give a stop command whenever they are no longer closed		N/A
	Where it is possible for an operator to reach the danger zone before the risk due to hazardous appliance functions has ceased, movable guards associated with a guard locking device in addition to an interlocking device that:		--
	- prevents the start of hazardous appliance functions until the guard is closed and locked, and		N/A
	- keeps the guard closed and locked until the risk of injury from the hazardous appliance functions has ceased		N/A
	Interlocking movable guards remain attached to the appliance when open, and		N/A
	they are designed and constructed in such a way that they can be adjusted only by means of an intentional action		N/A
22.ZE.6	Interlocking movable guards designed in such a way that the absence or failure of one of their components prevents starting or stops the hazardous appliance functions		N/A
	The guard is opened to the extent needed to cause the interlocking to operate and is then closed, the number of operations being defined in the specific Part 2:		N/A
	After this test any defect that may be expected in normal use is applied to the interlock system, including interruption of the supply, only one defect being simulated at a time		N/A
	After these tests the interlock system is fit for further use		N/A
22.ZE.7	Adjustable guards restricting access to areas of the moving parts strictly necessary for the work are:		--

IEC60335_2_14N - ATTACHMENT			
Clause	Requirement - Test	Result - Remark	Verdict
	- adjustable manually or automatically, depending on the type of work involved, and		N/A
	- readily adjustable without the use of tools		N/A
22.ZE.8	In case of interruption, re-establishment after an interruption or fluctuation in whatever manner of the power supply, the appliance does not restart		N/A
	However, automatic restarting of the operation is allowed if the appliance may continue to operate, without causing any hazard to the user, from the same point in its operating cycle at which the voltage interruption or fluctuation occurred		N/A
22.ZE.9	Appliances fitted with means to isolate them from all energy sources		N/A
	Such isolators are clearly identified, and		N/A
	they are capable of being locked if reconnection endanger persons		N/A
	After the energy source is disconnected, it is possible to dissipate any energy remaining or stored in the circuits of the appliance without risk to persons		N/A
ZF	ANNEX ZF (INFORMATIVE) CRITERIA APPLIED FOR THE ALLOCATION OF PRODUCTS COVERED BY STANDARDS IN THE EN 60335 SERIES UNDER LVD OR MD		--
	List of standards under CENELEC/TC61 with the allocation under the LVD (Low Voltage Directive) or the MD (Machinery Directive)	LVD	P
ZG	ANNEX ZG (NORMATIVE) UV APPLIANCES		--
	The following modifications to this standard apply to appliances having UV emitters		N/A
	This annex is not applicable to appliances covered by the scopes of IEC 60335-2-27, IEC 60335-2-59 or IEC 60335-2-109		N/A
7.12.ZG	The instructions for appliances incorporating UVC emitters include the substance of the following: WARNING — This appliance contains a UV emitter. Do not stare at the light source		N/A

IEC60335_2_14N - ATTACHMENT			
Clause	Requirement - Test	Result - Remark	Verdict
32	For appliances incorporating UV emitters the manufacturer delivers a declaration providing evidence that the plastic material exposed to the radiation is UV resistant		N/A
ZZ	ANNEX ZZ (INFORMATIVE) COVERAGE OF ESSENTIAL REQUIREMENTS OF EC DIRECTIVES		--
	Description of the relation between this European standard and the LVD (Low Voltage Directive, 2006/95/EC) and the MD (Machinery Directive, 2006/42/EC)	The new Low Voltage Directive 2014/35/EU is applicable from 20 April 2016	P

Annex EN 62233:2008			
Clause	Requirement + Test	Result - Remark	Verdict
EMF- ELECTROMAGNETICS FIELDS			
	The tested product also complies with the requirements of EN 62233:2008		P
	Limit100%	Measured max. : < 10%	P

11.Z101	TABLE: Temperature rise limits for surfaces		P
	Ambient (°C):		23
	Test voltage (V):		254,4
		dT (K)	Max. dT (K)
Enclosure surface		27	65
Remarks: The most unfavourable data was recorded.			

EN 60335-1/A11:2014- ATTACHMENT			
Clause	Requirement + Test	Result - Remark	Verdict

ATTACHMENT TO TEST REPORT IEC 60335-1 EUROPEAN GROUP DIFFERENCES AND NATIONAL DIFFERENCES Household and similar electrical appliances – Safety – Part 1: GENERAL REQUIREMENTS	
Differences according to:	EN 60335-1:2012/A11:2014
Attachment Form No.:	EN 60335-1_A11_2014_ATTACHMENT
Attachment Originator:	Eurofins
Master Attachment:	Dated 2014-08

7.14	In NOTE Z1, replace "IEC 82079-1" by "EN 82079-1". (EN 60335-1/A11)		P
------	--	--	---

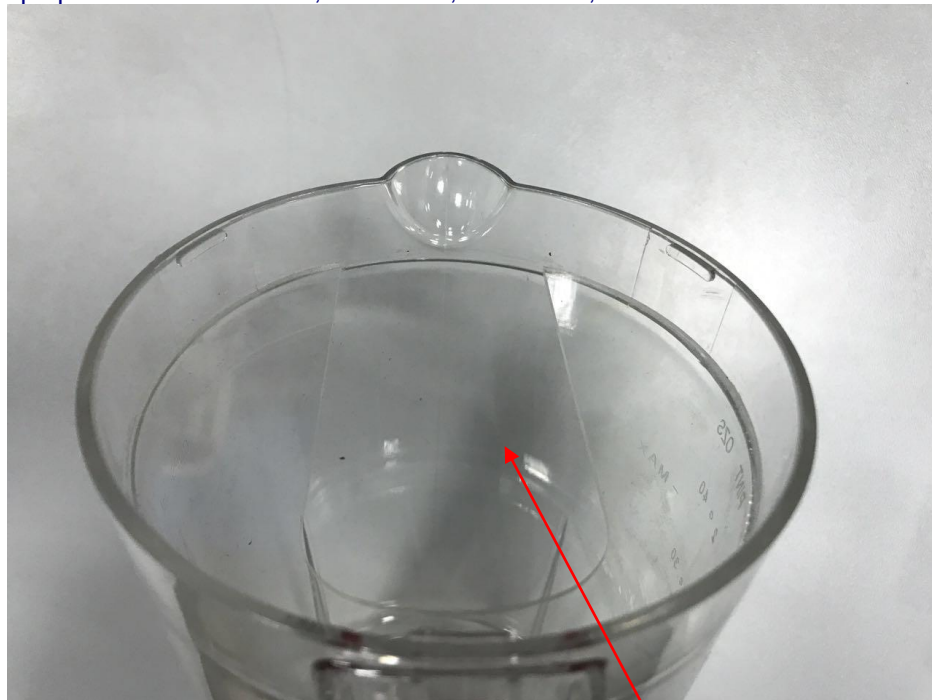
Annex ZF

Standard reference	To be listed under LVD (2006/95/EC)	To be listed under MD (2006/42/EC)
EN 60335-2-38, Commercial electric griddles and griddle grills (replacement)	<input checked="" type="checkbox"/>	<input checked="" type="checkbox"/> With moving parts

Appendix – Photographs

Photo 1

Description: Cup open view for GBL-003, GBL-003L, GBL-002A, GBL-002AL



Test probe similar to test probe B of IEC 61032 but having a circular stop face with a diameter of 50mm can not touch the moving part.

Photo 2

Description: Cup view for GBL-002DL, GBL-003DL, GBL-002D, GBL-003DL



Appendix – Photographs

Photo 3

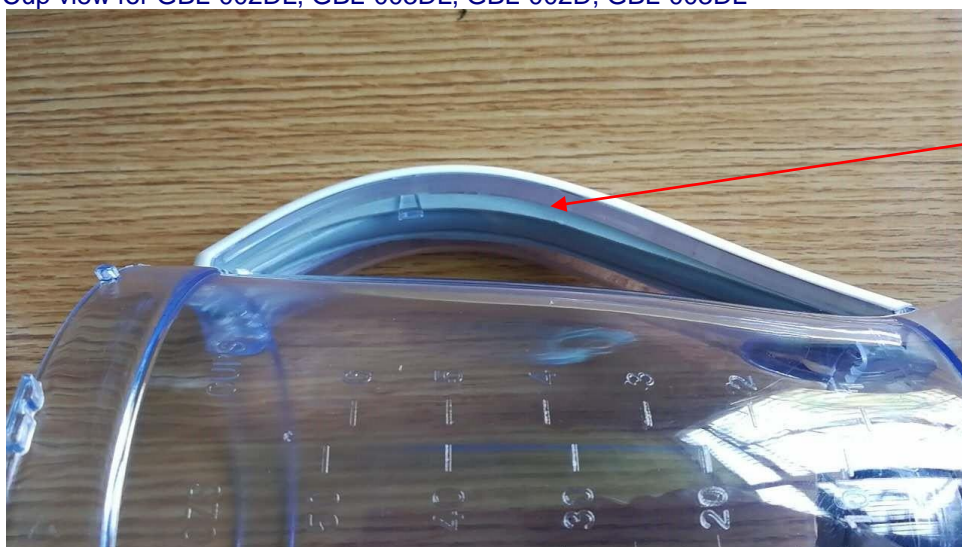
Description: Cup view for GBL-002DL, GBL-003DL, GBL-002D, GBL-003DL



Biased-off
switch
actuator

Photo 4

Description: Cup view for GBL-002DL, GBL-003DL, GBL-002D, GBL-003DL

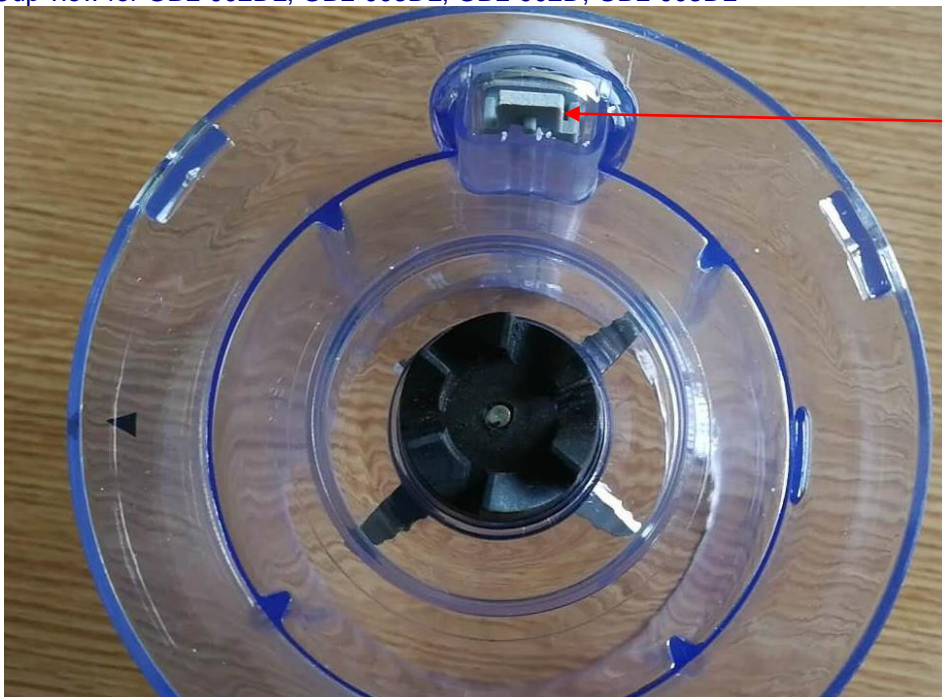


Biased-off
switch
actuator

Appendix – Photographs

Photo 5

Description: Cup view for GBL-002DL, GBL-003DL, GBL-002D, GBL-003DL



Biased-
off switch
actuator